



FIA FIM WORLD RALLY-RAID CHAMPIONSHIP



bp ultimate com tecnologia ACTIVE

# RALLY RAID PORTUGAL

PORTUGAL ■ EXTREMADURA



# Road Book Badajoz - Lisboa Service Crew

RALLYRAIDPORTUGAL.COM

**22-28/09/2025**

AUTOMÓVEL CLUB DE PORTUGAL

ROAD TO DAKAR

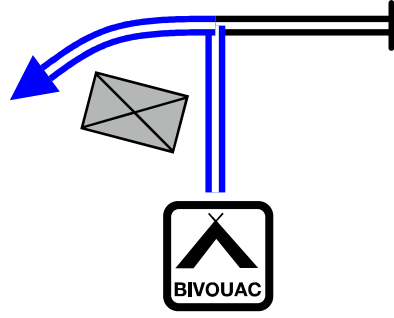
ORGANIZAÇÃO



PATROCINADORES



0,0

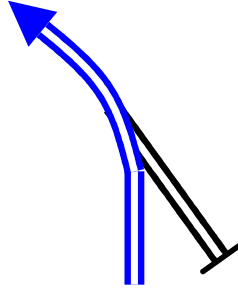


Turn left on the main road at the exit of the bivouac

0,00

1

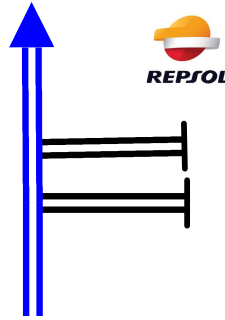
1,4



1,40

2

1,8

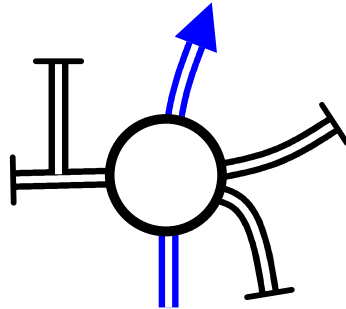


Petrol Station

0,40 ↓

3

2,0

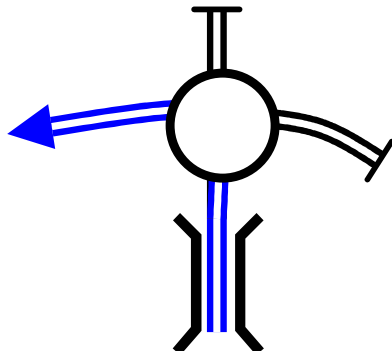


Follow  
Lisboa

0,20 ↓

4

2,2

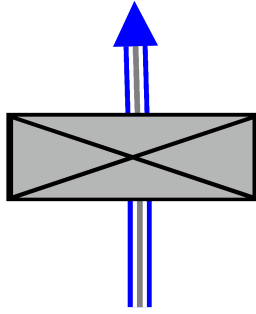


Follow  
Lisboa / Elvas

0,20

5

21,8



Km 137

A6

Toll

19,60

6

59,0



Km 100

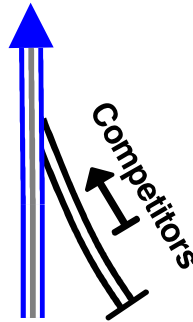
A6

Petrol Station

37,20

7

100,1



Km 58

A6

(start of service crew / race common route)

41,10

8

104,6



Km 54

A6

Petrol Station

4,50

9

151,9



Km 6

A6

Petrol Station

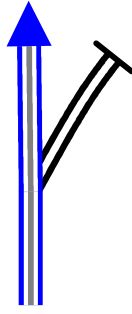
47,30

10

**157,1**

**5,20**

**11**



Km 1

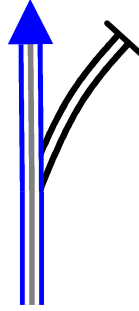
A6

**kpL**

**157,8**

**0,70**

**12**



Km 1

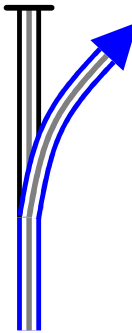
A6

**Follow  
A2  
Lisboa  
Setúbal**

**176,3**

**18,50**

**13**



Km 39

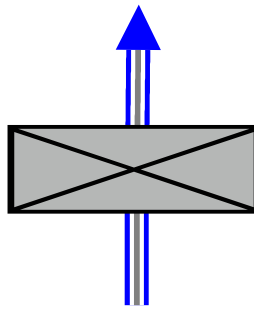
A2

**Follow  
A12 / Lisboa Norte /  
Montijo / Pinhal Novo**

**187,4**

**11,10**

**14**



Km 8

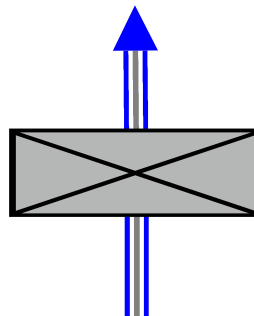
A12

**Toll**

**198,0**

**10,60**

**15**



Km 0

A12

**Toll**

200,3

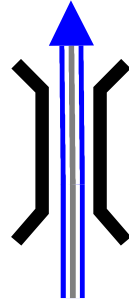


Petrol Station

2,30

16

200,9

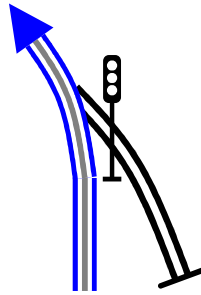


Vasco da  
Gama Bridge  
(average speed control)

0,60

17

214,6



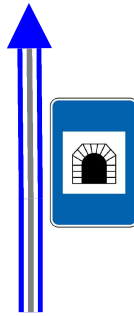
IC17 - CRIL



13,70

18

216,9



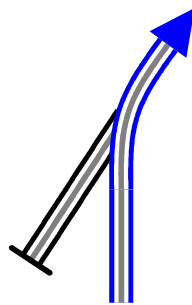
IC17 - CRIL

kpL until exit

2,30

19

219,2



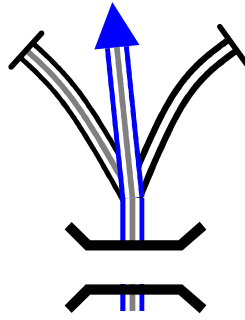
IC17 - CRIL

kpR for 700m

2,30

20

219,8



IC17 - CRIL

Direction

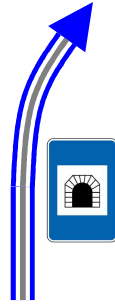
IC 17 CRIL - Algés



0,60

21

225,7



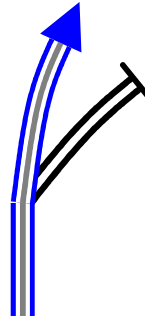
IC17 - CRIL



5,90

22

227,7



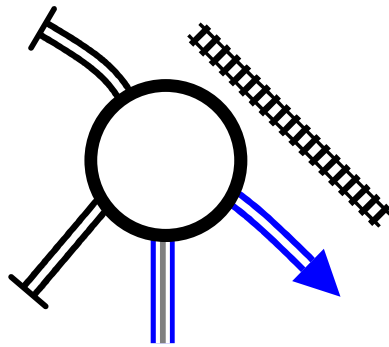
IC17 - CRIL

Tunnel exit  
**kpL** until next  
note

2,00

23

233,6

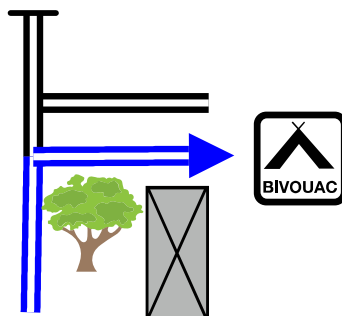


(no sign post)

5,90

24

234,2



0,60

25